

9-16-2021 TAG

Thursday, September 16, 2021

4:00 PM

Staff present: Steve A, Steve F, Andrew, Deirdre

TAG members present:

Elly Claus-McGahan, STC

Tony Belot

Joe Bushnell

Donna Thompson – new replacing Theresa

John Gustafson, USOR

Yvonne McCarty, NE Tacoma neighborhood

Frank Boykin

Melissa Malott

Tom Pierson (sitting in for Andrew T)

Mike Brandstetter

Meeting Agenda

- Progress Report (through July 2021)
- Summary of Visioning Outcomes
- Next Milestone and Introduce EIS

Milestone Progress Report

Community Visioning

- Visioning Report documents methods of engagement, public participation, and engagement outcomes

Baseline Conditions Report

- Documents existing policies, programs, regulations as well as baseline conditions for topics to be addressed in the Environmental Impact Statement.

Public Engagement Plan

- Steering Committee Reviewed and Approved on July 9, 2020

Overall Process Status

Milestones

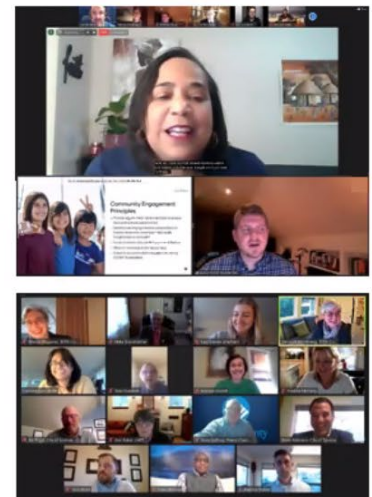
- ✓ Public Engagement Plan
- ✓ Baseline Conditions Analysis
- ✓ Community Visioning
- ❑ Plan and EIS Alternatives (in progress)
- ❑ Draft Plan and Draft EIS
- ❑ Plan Recommendation

Engagement Update

- ✓ Steering Committee (ongoing)
- ✓ Tideflats Advisory Group (ongoing)
- ✓ Community Visioning (completed)
- ❑ Public Comment on Proposed Alternatives
- ❑ EIS Public Scoping
- ❑ Comments on Draft EIS

Engagement Methods and Participation

Engagement Type	Participants
StoryMap & Online Survey	602
5 TAG Meetings	19
1 Community Kickoff	56
2 Focus Groups	27
18 Meetings in a Box	310
3 Panels	87
1 Community Report Out	13
TOTAL	1114



Strengths and Challenges

STRENGTHS

Survey Respondents

- Natural habitat (56%)
- Port of Tacoma shipping, trade activity, and jobs (48%)
- Living-wage jobs (29%)

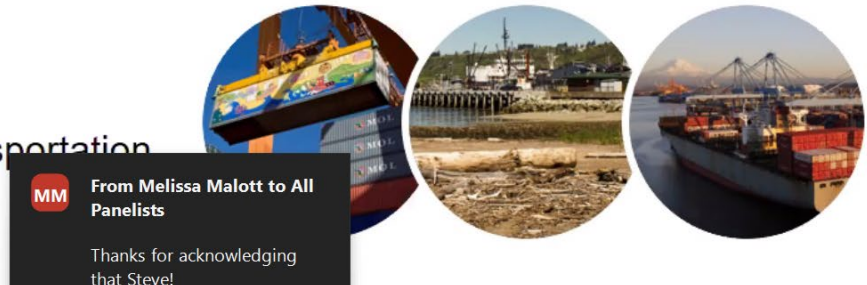
Meeting Participants

- Natural deep-water port
- Proximity to on-land transportation
- Jobs

CHALLENGES

Meeting Participants

- Complex interests
- Community divisiveness
- Incohesive uses



Land Use Priorities

INDUSTRIAL USES

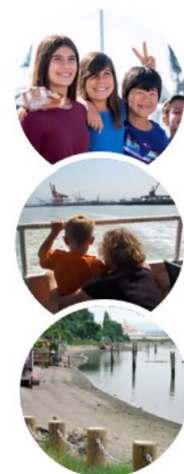
Survey Respondents

- Green industrial uses (59%)
- Container shipping and international trade (45%)
- Port maritime uses (39%)

COMPLEMENTARY USES

Survey Respondents

- Cultural, educational, and maritime heritage facilities (36%)
- Small-scale manufacturing spaces for fabrication or production (35%)
- Shoreline public access and recreation facilities (35%)



Economic Development Priorities

Survey Respondents

- Environmental remediation (58%)
- Investments in infrastructure to expand port activities (45%)
- Investments in transportation improvements (37%)



Natural Resources

MITIGATIONS

Survey Respondents

- Provide more cleanup of contaminated areas (52%)
- Provide more protection and enhancement of salmon, shellfish, and marine life (39%)
- Green industrial development standards to promote sustainability and reduce GHG emissions (31%)

VALUES

Survey Respondents

- Protect natural resources (64%)
- Serve cultural purposes (39%)
- Provide recreational opportunities (38%)



Favorite Features of the Tideflats

Skyline/Views

- Olympic Mountains/Mt. Rainier
- Cranes
- Container ships and recreational boating on Commencement Bay
- Topography

Access/Recreation sites

- Dick Gilmur Kayak Launch

Habitat sites

- Gog-le-hi-te Wetland
- Place of Circling Waters

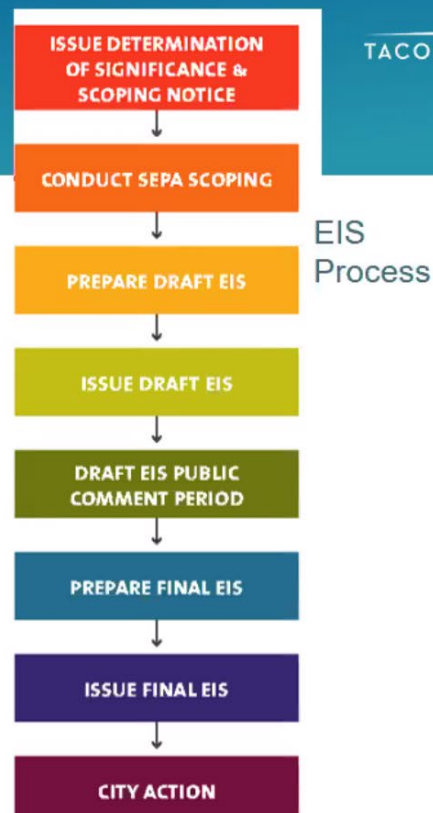
Cultural sites and activities

- Canoe Journeys
- Place of Circling Waters



EIS Overview

- Provides involvement for the public, other agencies, and tribes to participate in developing and analyzing information.
- Improves proposals from an environmental perspective [WAC 197-11-400(4)].
- Provides decision-makers with environmental information.
- Provides the information necessary for conditioning or denying the proposal



Non-Project EIS

TACON

Applicable Actions

- Legislation, ordinances, rules, regulations that contain standards controlling use of environment
- Land use plans and zoning laws

Features and Considerations

- Big picture analysis
- Emphasis on cumulative impacts
- May streamline future SEPA review of project actions (planned action)
- Format and content is more flexible than project-level EISs
- Helps inform public discussion of major policy options

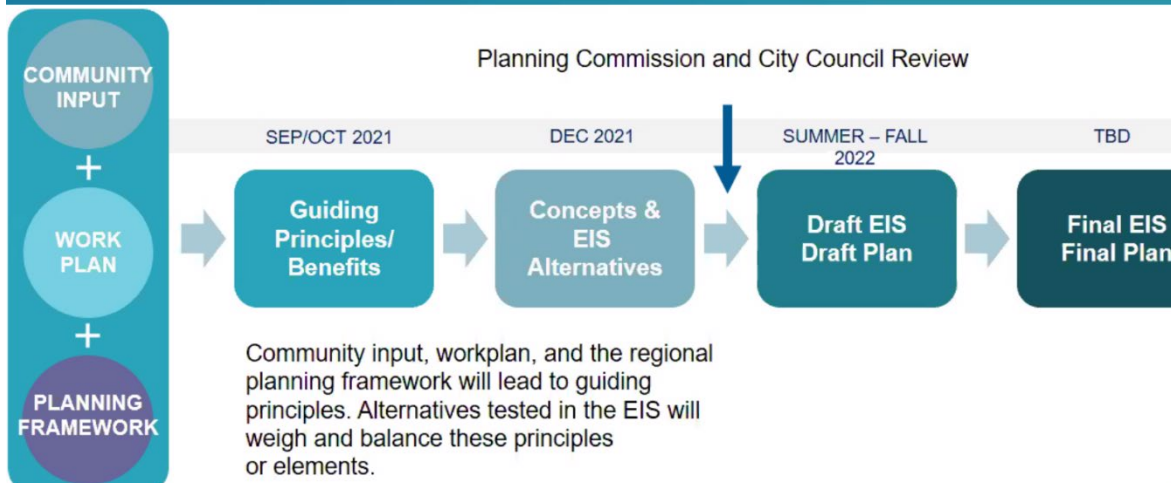
Proposal and Alternatives

- Identify proposal objectives (guiding principles)
- Think of alternatives as different ways to meet objectives (can weight the objectives differently)
- Proposal and alternative courses of action, including no action
- Reasonable alternatives
 - Actions that could feasibly attain or approximate proposal objectives at a lower environmental cost
- Distinct and different, capture full range of options
- Preferred alternative not required

Elements of the Alternatives

- Development assumptions and employment growth
- Land use and economic development
- Sea level rise and adaptation measures
- Transportation systems and investments
- Restoration and remediation

Community Input and Planning Phases



Upcoming Schedule

- **September/October:** Tideflats Advisory Group Review and Feedback
- **November:** Steering Committee Reviews Draft Alternatives
- **December:** Steering Committee Recommends Alternatives
- **Winter:** Tacoma Planning Commission review
- **Spring:** Tacoma City Council review and finalization

- Are draft principles adequate? What is missing or should not be included?
- How would you weight the principles? What are your highest priorities?
- “Green” and/or “Clean” Industry was a significant community priority coming out of the Visioning process. How would you define “Green” or “Clean” industry, and do you prefer one term over the other?

Steve A:

Broad reaction to the full list

Provide comments, suggestions on what you like or don't like

–will be sending email with draft Guiding Principles and link to survey

From Melissa Malott to [Hosts and panelists](#):

Thank so much to all of you working on this behind the scenes. This is a difficult time to be doing this work and I appreciate all of you.

McCarty – gap in health, is there a process for adding individual to TAG to address Public Health
SA – work plan set up the TAG, this has been raised with some of the steering committee members, happy to bring back to staff leadership group if they would be open to adding to the advisory group
Joe Bushnell – what kind of scope are we talking about for the EIS, existing uses?, entire Tideflats?
SA – yes, entirety of the Tideflats
Bushnell – how is legacy pollution going to be folded in
SA – legacy contaminated and existing restoration will be factored in to baseline conditions
Carol Ann Mangan – how does it dovetail with (non) interim regs

From [Carol Ann Mangan](#) to [Everyone](#):

How does it dovetail with the (Non) Interim Regulations now before only one of the five governments? The EIS can't undo harm, only prevent it. (Remediation isn't undoing harm, only mitigating it, whether it is to the soil, water, air, which all pertain to public health concerns.

SA – IPS made recommendation to city council – link included in message to TAG

- non-interim process may change land uses in the Tideflats, we need to be cognizant of those changes
- EIS needs to be based on what is in the code, would be considered as part of no action alternative